

City of Vineland Complete Streets

January 20, 2016

Kathleen Hicks, P.P., AICP
Supervising Planner

Logical Progression of Complete Streets From a Land Use Perspective

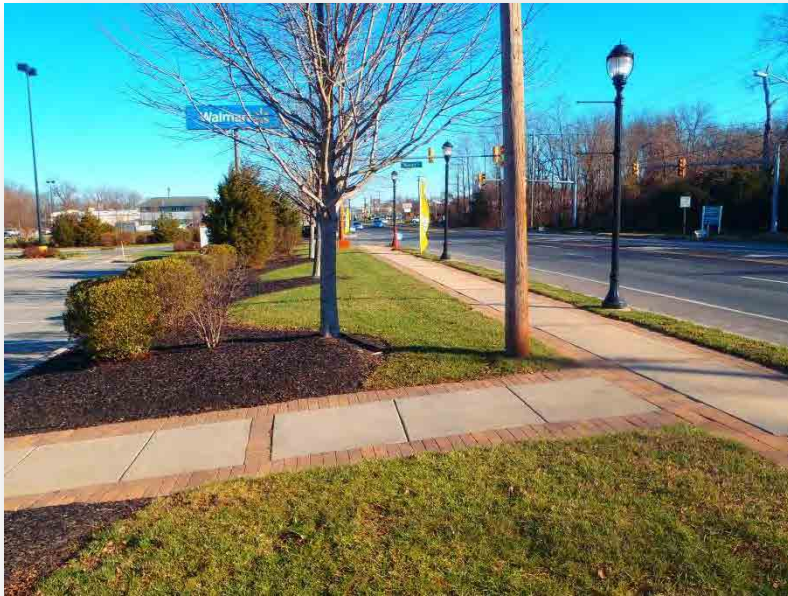
- * Complete Streets Policy
- * Master Plan
- * Land Use Ordinance
- * Any Redevelopment Plans

Vineland's Incremental Implementation

- * Recommended Site Plan Revisions
- * 2008 Land Use Ordinance Provisions
- * 2008 Master Plan Transportation Element
- * 2011 Complete Street Policy
- * 2011 U-Pull-It Redevelopment Plan
- * 2012 Newcomb Redevelopment Plan

Vineland's Incremental Implementation

* Recommended Site Plan Revisions



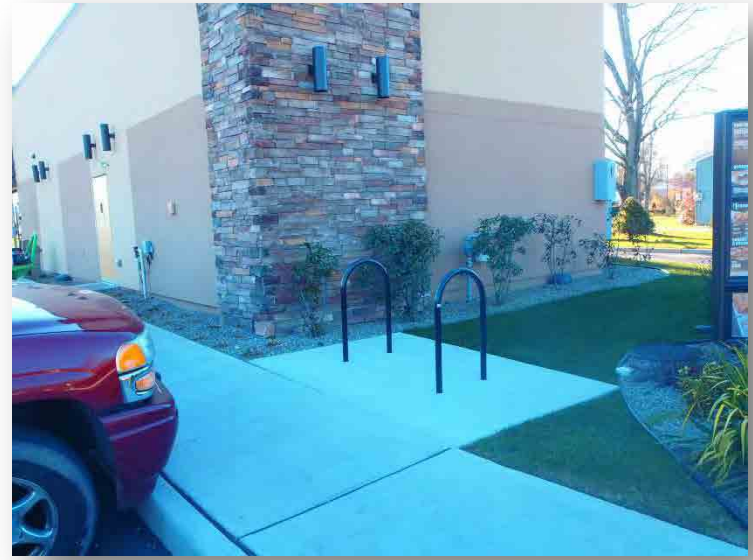
Vineland's Incremental Implementation

- * 2008 Land Use Ordinance Provisions



Vineland's Incremental Implementation

* 2008 Land Use Ordinance Provisions



Vineland's Incremental Implementation

- * 2008 Land Use Ordinance Provisions



Vineland's Incremental Implementation

- * 2008 Land Use Ordinance Provisions



Vineland's Incremental Implementation

* 2011 U-Pull-It Redevelopment Plan



Vineland's Incremental Implementation

- * 2011 U-Pull-It Redevelopment Plan



Vineland's Incremental Implementation

- * 2011 U-Pull-It Redevelopment Plan



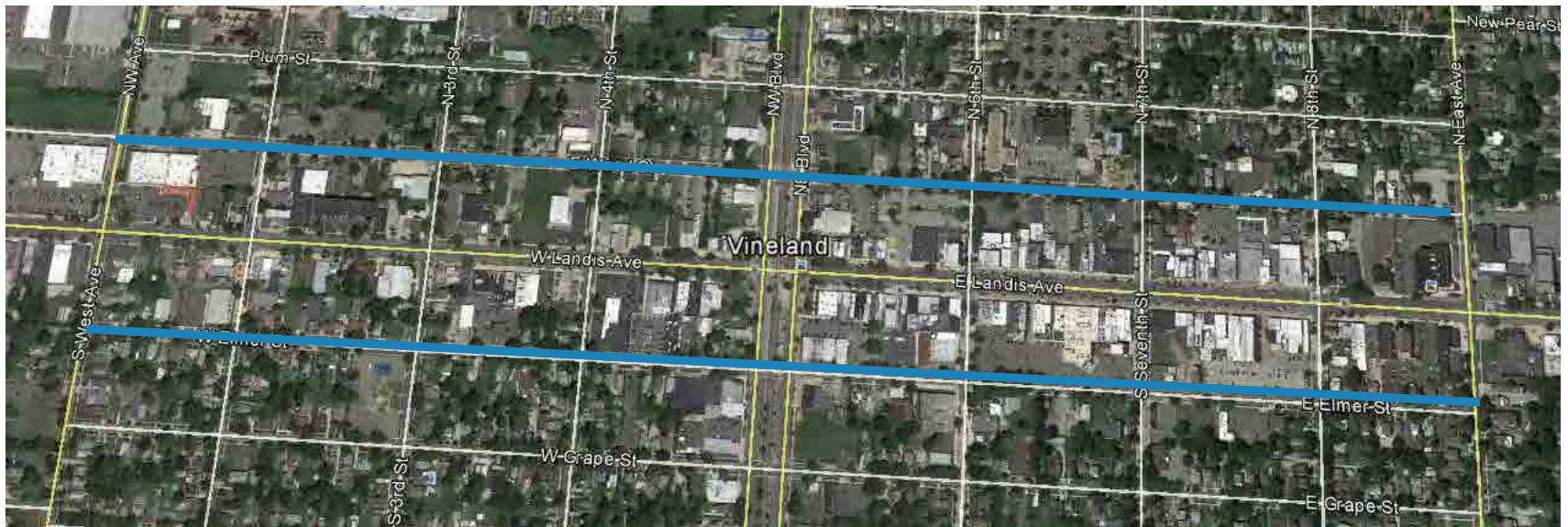
Vineland's Problems Encountered

- * Wood and Elmer Streets Bike Lanes
- * Chestnut Avenue Road Diet

Vineland's Problems Encountered

- * Wood and Elmer Streets Bike Lanes

The City Installed Bike Lanes in Spring of 2013 through a Partnership
with Robert Wood Johnson Foundation



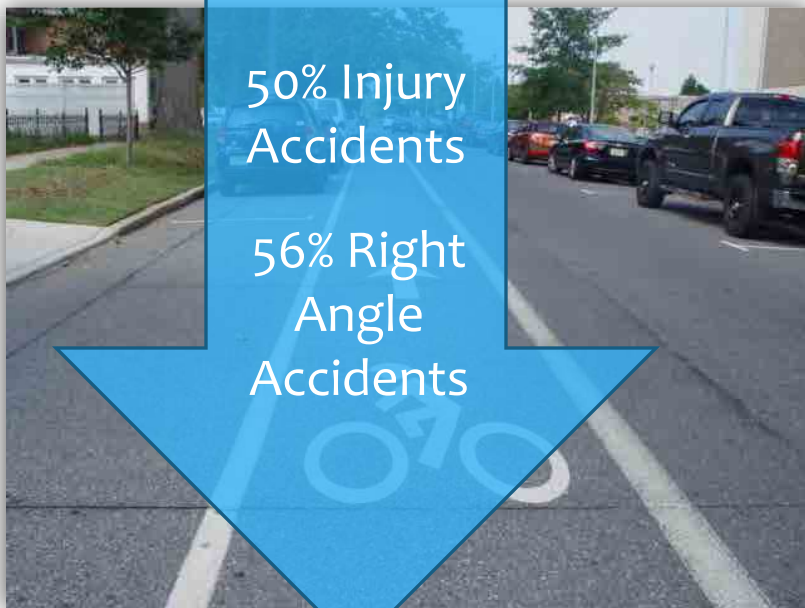
Vineland's Problems Encountered

Elmer Street

39% Total
Accidents

50% Injury
Accidents

56% Right
Angle
Accidents

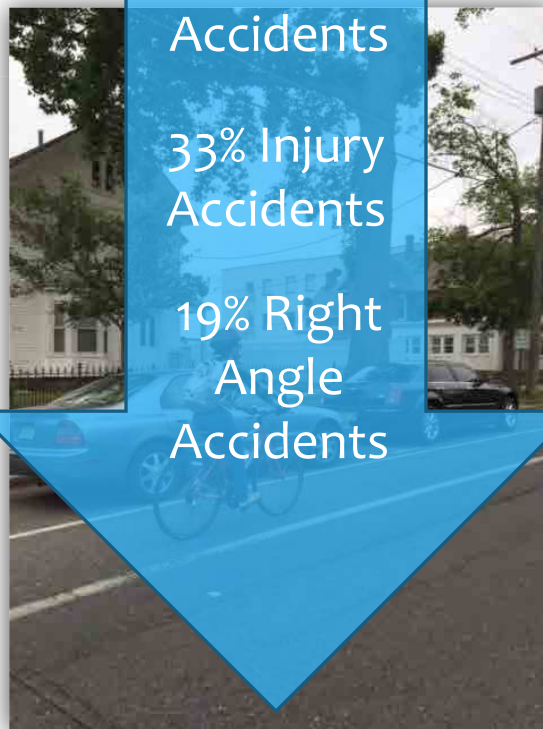


Wood Street

20% Total
Accidents

33% Injury
Accidents

19% Right
Angle
Accidents



Vineland's Problems Encountered

* Chestnut Avenue Road Diet

