



Complete Streets In South Jersey: Lessons Learned

COMPLETE STREETS IN SOUTH JERSEY: ◆ LESSONS LEARNED ◆



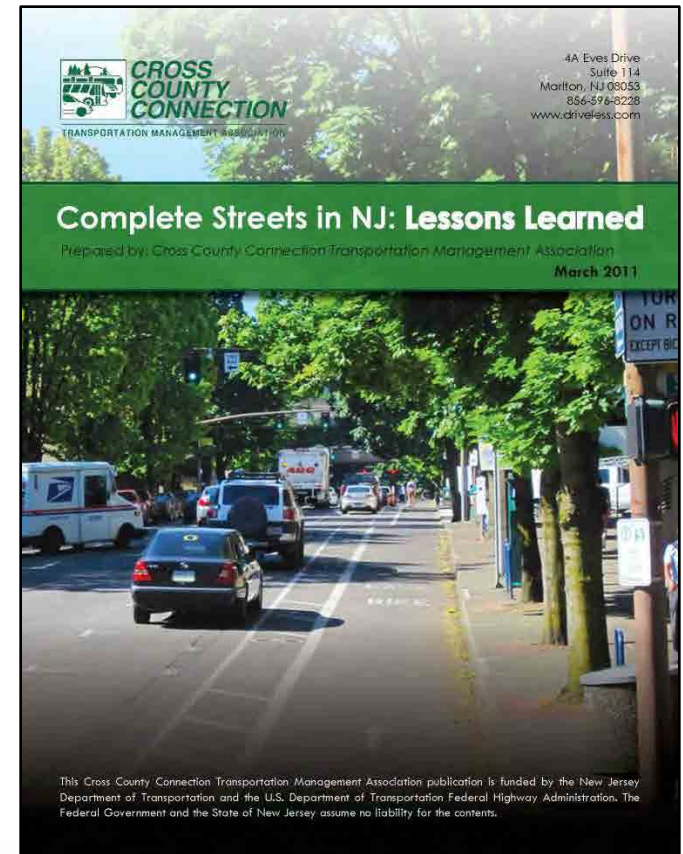
Prepared by:
Cross County Connection
Transportation Management Association
June 2015

Patrick Farley, AICP, PP
Cross County Connection TMA
Sr. Land Use & Transportation Planner



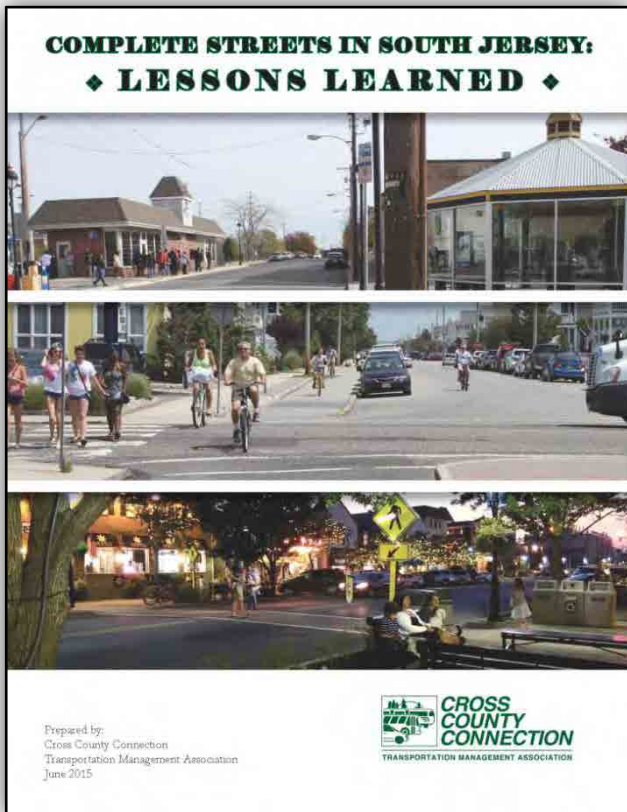
Complete Streets Lessons Learned (2011)

- Prepared in 2010
- Similar workshop held in October 2010
- Only 5 Complete Streets Policies statewide
 - 4 municipalities
 - 1 county
 - 0 in South Jersey (Linwood adopted 2/2011)
- 2015
 - 123 municipalities
 - 7 Counties
 - 30 in South Jersey





Complete Streets: Lesson Learned in South Jersey (2015)



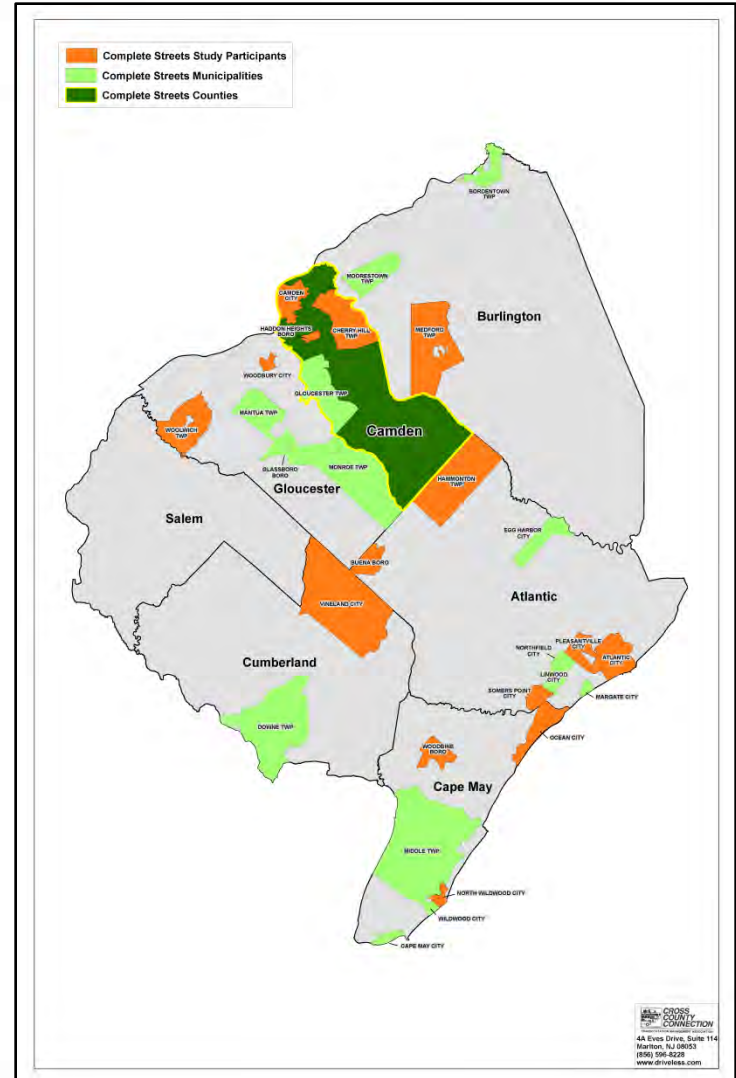
Study Goals:

- To identify and highlight local best practices
- Identify common themes
- To provide resources for those either considering or currently implementing a Complete Streets policy



Study Methodology

- Get information directly from the source
- Interview representatives from the communities in the region that have a Complete Streets Policy
 - 14 municipalities
 - 1 county





What is a Complete Streets Policy?

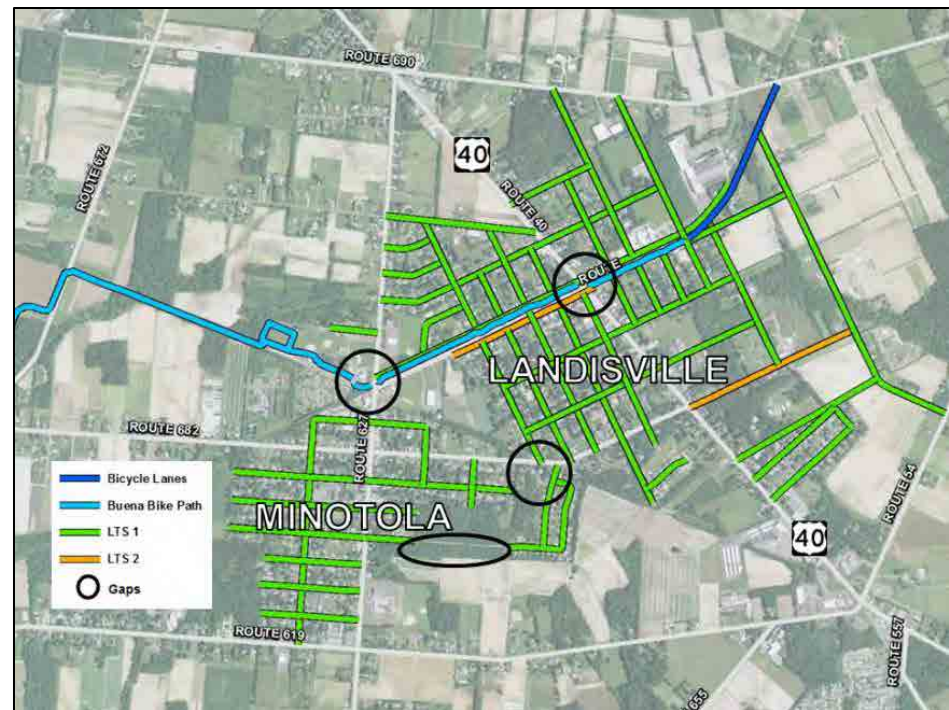
- Complete Streets is the concept and practice of balancing the needs of all roadway users in transportation projects.
- Primary mechanism - The Complete Streets Policy





Planning is an Asset

- Planning works as an effective guide
- Works in tandem with a Complete Streets Policy
 - To either implement the plan or implement the policy

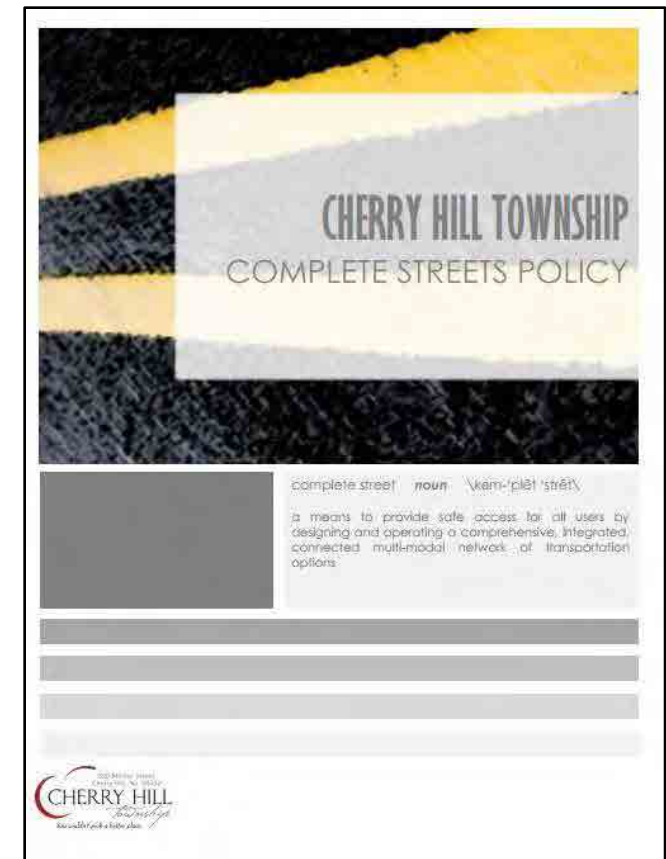


Buena Borough, Atlantic County



Have a Written Implementation Plan

- Spell out the basic steps of the implementation process
- Make Complete Streets implementation routine
- Cost effective





Use a Project Review Checklist

- Ensures process is
 - Routine
 - Clear
 - Consistent

NJDOT Complete Streets Checklist

PRELIMINARY ENGINEERING CHECKLIST

Instructions:

For each box checked, please provide a brief description for how the item is addressed, not addressed or not applicable and include documentation to support your answer.

Item to be Addressed	Checklist Consideration	YES	NO	N/A	Required Description
<i>Bicyclist, Pedestrian, and Transit Accommodations</i>	Does the proposed project design include accommodations for bicyclists? Examples include (but are not limited to): Bicycle facilities: bicycle path; bicycle lane; bicycle route; bicycle boulevard; wide outside lanes or improved shoulders; bicycle actuation at signals (loop detectors and stencil or other means); signs, signals and pavement markings specifically related to bicycle operation on roadways or shared-use facilities; bicycle safe inlet grates Bicycle amenities: Call boxes (for trail or bridge projects); drinking fountains (also for trail projects); secure long term bicycle parking (e.g., for commuters and residents); and secure short term bicycle parking.	<input type="checkbox"/>	<input type="checkbox"/>	<input type="checkbox"/>	
	Does the proposed project design address accommodations for pedestrians? Examples include (but are not limited to): Pedestrian facilities: Sidewalks (preferably on both sides of the street); mid-block crosswalks; striped crosswalks; geometric modifications to reduce crossing distances such as curb extensions (bulb-outs); pedestrian-actuated traffic signals such as High Intensity Activated Crosswalk Beacons, Rapid Rectangular Flashing Beacons; dedicated pedestrian phase; pedestrian	<input type="checkbox"/>	<input type="checkbox"/>	<input type="checkbox"/>	



Incorporate Complete Streets into Planning Docs and Development Ordinances

- Master Plan
 - Circulation element
 - Land use element
- Development Review and Approval Process
 - Site Review
 - Redevelopment plans

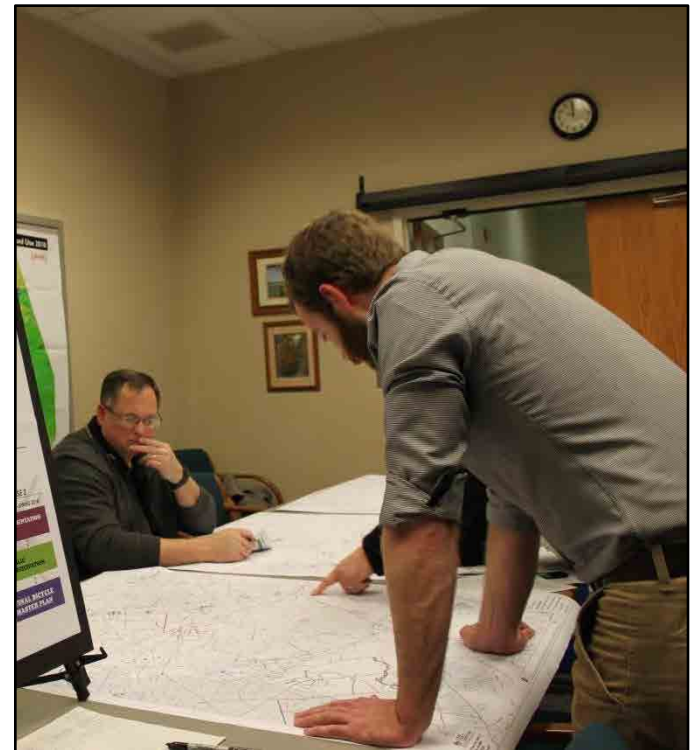


Vineland, Cumberland County



Spell Out Your Project and Exemption Review Process

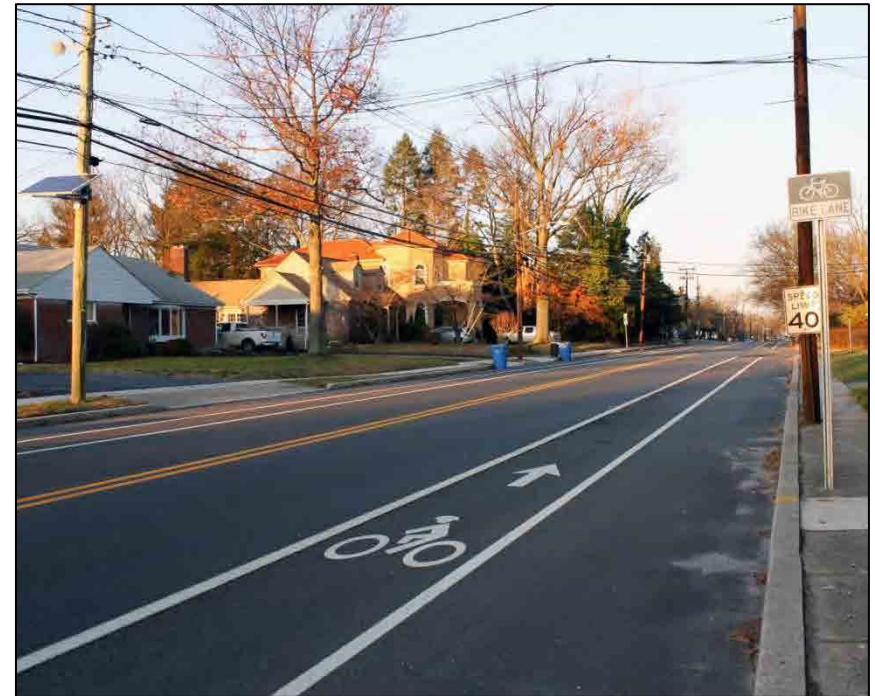
- Appoint staff member who will over see review
- Ensure exempt projects are justified
- Create a review committee?





Partnerships are Valuable

- Leverage shared resources
- Identify every opportunity
- Overcome jurisdictional barriers



Cherry Hill Township, Camden County



Measure Your Success!

- Track plan implementation
- Measure miles of new sidewalks, bikeways, etc.
- Track bicycle and pedestrian crashes
- Measure impacts to community Health
- Apply to recognition Programs
 - Sustainable Jersey
 - League of American Bicyclists





Lesson Learned

Universal Truth:

“Despite their differences, these fifteen municipalities and one county share the mission of improving the safety and health of their residents through enhancing the quality of transportation options in their communities.”



PLEASE CONTACT US!

Visit:

www.driveless.com

or

www.transportationplanning.org

856-596-8228

farley@driveless.com

Thank You!